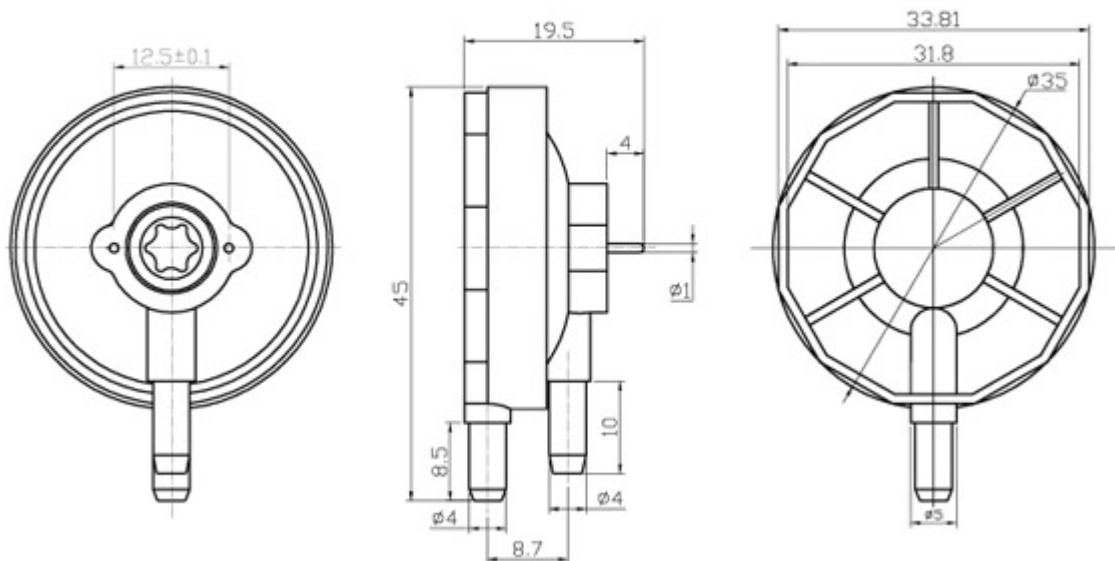


LFS-02B Low Pressure Switch (5mbar-300mbar)

LFS-02B Low Pressure Switch is designed as an economical interface between pressure systems and Printed Circuit Boards. This switch can be used as a gauge or differential pressure switch with almost no hysteresis. It is applied to detection both positive and negative pressure. Features of this Low Pressure switch include a body design that allows the pressure ports to be rotated, various terminal styles including wire leads. A little larger dimension than LFS-02 make LFS-02B can sense lower pressure or vacuum than LFS-02.



Dimension in mm



[Click here](#)

| | |
|---------------------|--------------|
| Model | LFS-02B |
| Electrical Function | 1 pole NO |
| Switch Rating | 250 mA 250 V |
| Temperature | -10~+90°C |

| | | |
|-------------------------|--|---|
| Electrical Connections | Solder pins 1.0 mm; wire leads with different insulation,length and socket | |
| Pressure Range | Pressure:5~ 300 mbar (1mbar=100Pa) Vacuum:5 ~ 300 mbar | |
| Sample Line Connections | Inlet 4.0 mm for tube connection | |
| Medium | Non hazardous gas only | |
| Fixing Methods | Soldering on PCB | |
| Material | Cover | PA 66 |
| | Base | PBT |
| | Adjust Screw | PA 66 |
| | Contact Carrying Parts | Brass Silver Plated (Gold plating on request) |
| | Membrane | Silicone (Nitrile, EPDM, Perbunan on request) |

Conversion: 1mbar = 100 Pa 1 in/H2O= 249 Pa